



ANNUAL REPORT TO THE COMMUNITY

2019

Dear Springfield Platteview Community,

The purpose of the Community Annual Report is to provide our community an overview of assessment results, finances, and more. It is an opportunity to highlight the vision and the many successes of our students, teachers, and the district as a whole. The process of teaching and learning and the development of children is complex and cannot be adequately communicated in a single report. We encourage all stakeholders, such as yourself, to review the complete district profile at <https://nep.education.ne.gov//snapshot.html#77-0046-000>.

Planning is an integral part of any successful school district. The Springfield Platteview Community Schools work continuously together to provide a rigorous and relevant academic curriculum and extracurricular programs to prepare our students to meet the goals and challenges that lie ahead. We continue to strive for "Connecting Passion with Potential" in all the things that our students have accessible to them.

Student achievement levels continue to be high. Based on comparative measurements, student achievement in the Springfield Platteview Community Schools continue to meet or exceed state and national levels. Graduation rates are high, exceeding the statewide averages and far exceeding the national averages. Our teaching staff is endorsed at a high level in their subject areas. Our district continues to demonstrate effective and efficient use of district funds in providing a quality educational experience for each student.

The success of our students, teachers, and district is strongly contributed to the support from our patrons, parents, and communities who make education a top priority. As a district, we thank you for your support so that we can continue to provide a quality educational experience for each student.

Our District

Springfield Platteview Community Schools is an educational community where we know and value every student. We believe there is something different here. Our small school and class sizes allow our students to experience learning in a safe, supportive, and caring environment.

We have an excellent professional faculty and staff, along with a supportive community and group of parents who want the best for our students. Our district is at the cutting edge of technology with a 1-to-1 iPad initiative in kindergarten through twelfth grade. This allows our students every opportunity in organization, productivity, and content area engagement. Our students need to be at the forefront of having the skills to compete in their future careers by *Connecting Passion with Potential*.

Our Community

Springfield Platteview Community Schools is comprised of two pre-schools; two elementary schools, grades K-6; one junior high, grades 7-8; and one high school 9-12. Springfield Platteview Community Schools is approximately 93 sq/mi south of the Omaha metro area. It is located in southern Sarpy County. The district includes the communities of Springfield and Westmont, Nebraska.

Our Mission

The mission of Springfield Platteview Community Schools is to ensure that all students acquire the college and career ready skills and behaviors necessary for each student to succeed now and into his/her future. Personalized attention and small town values make Springfield Platteview Community Schools a great place to learn and grow. Due to these attributes, we pride ourselves on high achievement scores, graduation rates, and lower discipline issues.



District PreK-12 Enrollment Continues to Increase

School	2015-2016 Enrollment	2016-2017 Enrollment	2017-2018 Enrollment	2018-2019 Enrollment
Platteview High School	398	397	393	404
Platteview Central	184	202	199	191
Springfield Elementary	261	266	275	265
Westmont Elementary	261	253	245	245
Pre School	67	55	54	55
Total	1,171	1,173	1,166	1,160

The district and the Board of Education continue to monitor the growth and be proactive to have an understanding of the needs and prepare for the future for each student at Springfield Platteview Community Schools.

Tax Levy Rates

The tax levy is determined by the district's general, bond, and building funds. The Springfield Platteview Community Schools remains the lowest tax rate in the Omaha Metro area. As a district, we have always believed that we are the best-kept secret in the metro area. When reviewing the data, we know that we can provide our students with a quality education while examining the spending of the district.

The district decreased the tax levy again in 2018-2019. It is expected that the tax levy will continue to decrease until more residential growth occurs. Since The Learning Community's common levy was removed in the 2017-2018 school year, the district has been able to use the additional funding to improve facilities and programs. A gradual decrease in the tax levy is expected to continue as valuations in the district continue to build.

2018-2019 Tax Rates in the area:

Bennington	1.4300
Elkorn	1.3900
Westside	1.3849
Gretna	1.3846
Papillion	1.3050
Plattsmouth	1.2706
Ralston	1.2574
Millard	1.2510
Louisville	1.1783
Omaha	1.2450
Bellevue	1.1246
DC West	1.0844
Springfield Platteview	1.0262

2018-2019 Expenditures*

Springfield Platteview Community Schools continues to prioritize student learning.

Regular Instruction	\$9,606,091	Debt Services	\$20,500
Support Services - Students	\$940,371	Federal Programs	\$404,908
Support Services - Instruction	\$516,417	Transfers	\$25,000
Support Services - Administration	\$360,299	TOTAL	\$15,738,588
Office of the Principal	\$1,039,523		
Central/Business Services	\$471,445		
Operation and Maintenance of Plant	\$1,579,143		
Student Transportation - Regular	\$572,955		
Student Transportation - Special Education	\$175,234		
State Programs	\$26,702		

*Expenditure information is the most recent available for district reporting from the Nebraska Department of Education (NDE).

District Revenue Summary*

Local Taxes	\$14,523,300
County Fines & Fees	\$38,903
State	\$2,140,723
Federal	\$459,544
Other	\$15,089
TOTAL	\$17,177,559



Strategic Plan Drives District Focus

The Board of Education believes in a strong plan to help guide the future of our district. The future of our district looks strong. Our strategic plan over the next year will help put us in a position to continue to have high student achievement and allow our students to have an edge over their peers heading for college or their careers. Throughout the 2018-2019 school year, the district did planning to assist in the process to increase the opportunities for students within the career and academic areas. This plan creates a vision for all stakeholders. A set of goals were recommended and approved by the Springfield Platteview Community Schools Board of Education and they are as followed:

Goal I

SPCS will consistently (continuously) offer comprehensive, academic, pathways leading to college and career opportunities for all students.

Strategic Objective #1

By the fall of 2018, Platteview High School will identify pertinent, applicable, foundational courses across the diploma pathways that will prepare students to be career and college ready.

Strategic Objective #2

By 2019, SPCS will have selected flexible schedule options to enhance learning opportunities that recognize the needs/interests of all students. (The options may include 1) alternate annual calendar; 2) consideration of block scheduling; 3) additional before and after school learning opportunities; 4) reviewing current late start PLC time; 5) increase in online and/or distance learning opportunities.)

Strategic Objective #3

By 2018, SPCS will initiate partnerships with businesses and trade unions to facilitate student internships and apprenticeships.

Strategic Objective #4

By 2018, SPCS will identify current and future career opportunities and offer coursework to help prepare students for such careers. Courses may include high skill/ high need/ high pay careers that can be offered online and through community colleges- especially in technology and engineering (coding, computer programming, science and robotics).

Strategic Objective #5

Beginning immediately, SPCS will expand dual credit opportunities.

Strategic Objective #6

By 2020, SPCS will develop a College and Career Center for student/family/community support for college applications/ financial aid/ scholarships, resume building, career opportunities/ jobs.

Goal II

By 2022, SPCS will provide the facilities and staffing needed to keep up with growth and be competitive with other metro area schools in curricular and activities programs.

Goal III

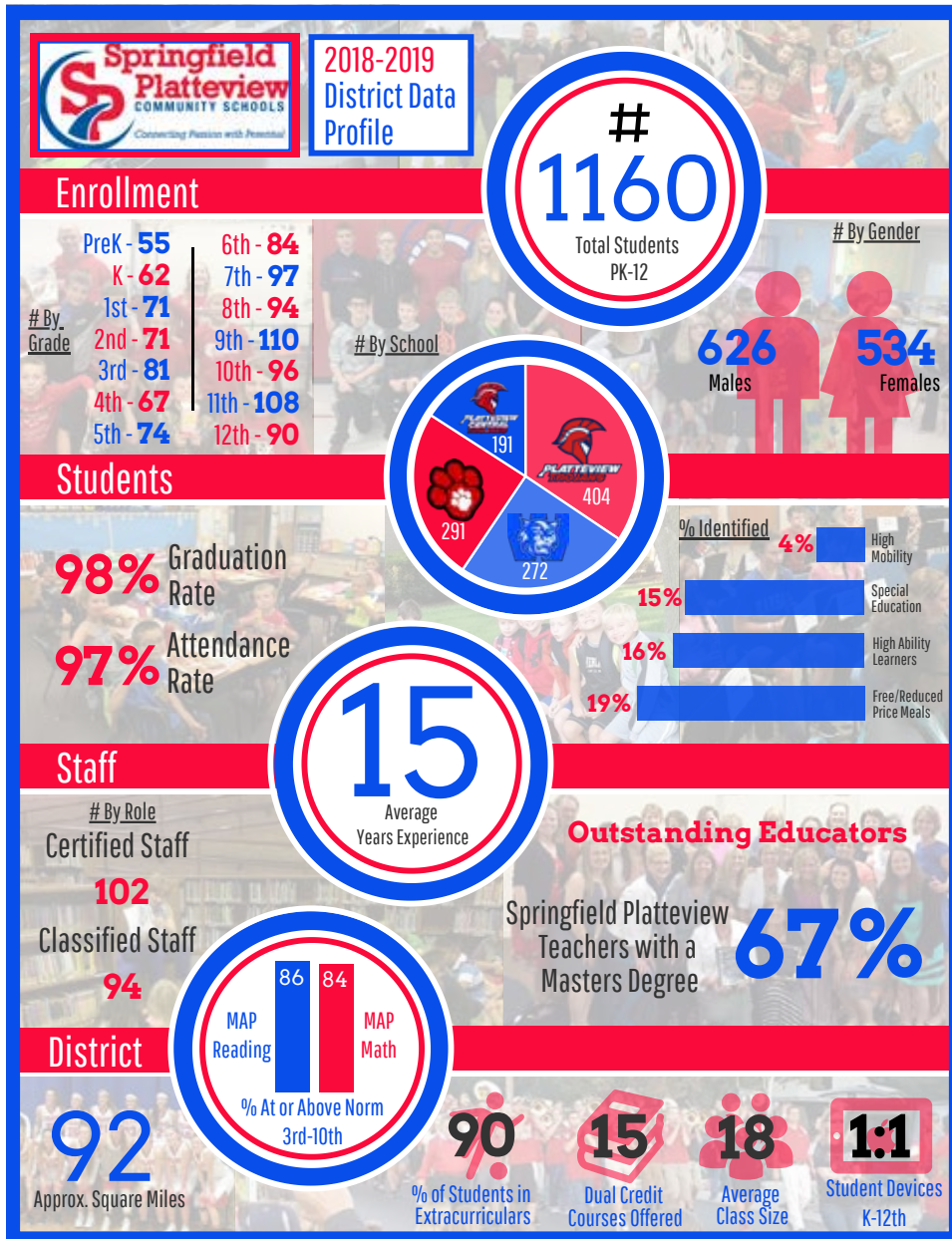
By August 2018, SPCS will create an Alumni and Friends Society to build outreach with alumni and friends of the district to increase communication, build relationships, coordinate activities, and enhance fundraising to support students, staff, and programs in the district.

AQuESTT

AQuESTT, the Accountability Education System Today and Tomorrow is used to rate public schools in Nebraska. The state has gone beyond measuring against standard requirements to create a next-generation accountability system that supports and rewards continuous improvement for every student, school, and educator. The result is an innovative approach that views each student holistically, classifies all schools into four performance levels. Using this system, districts across the state are classified as Excellent, Great, Good or Needs Improvement.

For 2018- 2019, each school in the district continues to show great gains from the previous school year. As a district, we continue to work for the highest classification and are proud of how each school was classified. As a district, we received a "Great." Here is how the individual schools were scored:

Springfield Elementary: "Great"
Westmont Elementary: "Excellent"
Platteview Central: "Excellent"
Platteview High: "Great"



Springfield Platteview Community Schools Foundation

Each year, public schools face the difficult task of building their educational programs solely on local property taxes and limited state funds. As our district grows, so do the needs of the students, staff, and community. Unfortunately, limitations of tax funds have a direct impact on educational growth within the community. Thus, other resources must be used to help supplement our growth and needs.

The SPCS Foundation provides avenues where individuals, organizations, and businesses can help support the school system through tax deductible contributions. The Foundation is a legally incorporated and non-profit organization that was established in accordance with the state and federal tax guidelines.

A seven-member Board of Directors representing our district and the surrounding community governs the operation of the Foundation. No financial compensation is provided to board members for services.

The foundation provides the following opportunities:

- Monetary awards to recognize meritorious instruction
- Student scholarships
- Promotion of educational technology
- Small grants for innovative instructional opportunities
- Promotion of community educational opportunities
- Career development programs
- Stimulate programs or projects in the Humanities

In the past, supporting individuals and/or organizations have contributed financial support to the foundation by the following:

- Cash or securities gifts
- Memorial gifts or scholarships, honoring relatives or friends
- Deferred gifts through bequests, trusts, or life insurance policies
- Gifts designed to support a particular program

The Foundation Board of Directors currently includes:

- Gene Lieneman, President
- Keith Hentzen, Vice President
- Brett Richards, Treasurer
- Chris Dill, Member
- Kyle Fisher, Member
- Tim Lorenz, Member
- Tom Marshall, Member
- Brenda Sherman, Member

Financial Advisor: John Wright and Morgan Stanley



Board of Education

The Board of Education believes in quality education that only a smaller district can provide. The Board has been an instrumental part of strategic planning that has brought the district great results with high student achievement scores on state and national assessments while allowing every opportunity for each student, whether they are college or career-oriented.

The Springfield Platteview Community Schools Board of Education oversees the management of the district schools and is the policy-making body. The board has overall responsibility for the curriculum, school taxes, budget, employment of the superintendent and other professional staff, and facilities.

The Board of Education believes in creating an outstanding culture for our teachers to teach in and our students to learn in. They also believe in a rigorous curriculum, effective teachers, competitive facilities, and exceptional parent involvement.

2019 Board of Education

Cori Swanson *President*
Lisa Roseland *Vice President*
Brenda Sherman *Secretary*
Kyle Fisher
Bob Icenogle
Brian Osborn



Notices

Student Assistance Program: The Springfield Platteview Community Schools makes available a student assistance team through each school building to provide problem solving and assistance for students and families who may be experiencing obstacles academically and/or emotionally. Please contact your child's school to discuss in further detail.

Special Education Child Find: Any resident of the Springfield Platteview Community Schools may refer a child for special education services because of speech, language, hearing, visual, physical or behavioral impairment, learning disabilities, or struggles with meeting developmental milestones. Additional information can be found at: <https://www.springfieldplatteview.org/Special-Education>.

Notice of Non-Discrimination: Springfield Platteview Community Schools, Springfield, Nebraska, does not discriminate on the basis of handicap in its educational programs and activities, including its admissions and employment practices, all as required by Section 504 of The Rehabilitation Act of 1973. Springfield Platteview Community Schools, Springfield, Nebraska, is an Equal Opportunity Employer and does not discriminate on the basis of sex, race, color, creed, religion, or national origin in employment, educational program, or other activities in which we operate.

Teacher Qualification: As part of the federal No Child Left Behind legislation, all parents have the right to request information about teacher qualifications. General information about district teacher qualifications is available on the Nebraska Department of Education website (www.education.ne.gov) as part of the State of the Schools report. Specific requests for teacher qualification information should be directed to the Superintendent of Springfield Platteview Community Schools at 14801 South 108th Street, Springfield, NE 68059.

Nebraska Seat Belt/Safety Reminder: All children up to age eight must ride correctly secured in a Federally-approved car seat or booster seat. This requirement is effective for all persons operating a motor vehicle within the State of Nebraska. No matter the length of the trip, all riders should buckle up at all times in a motor vehicle.